



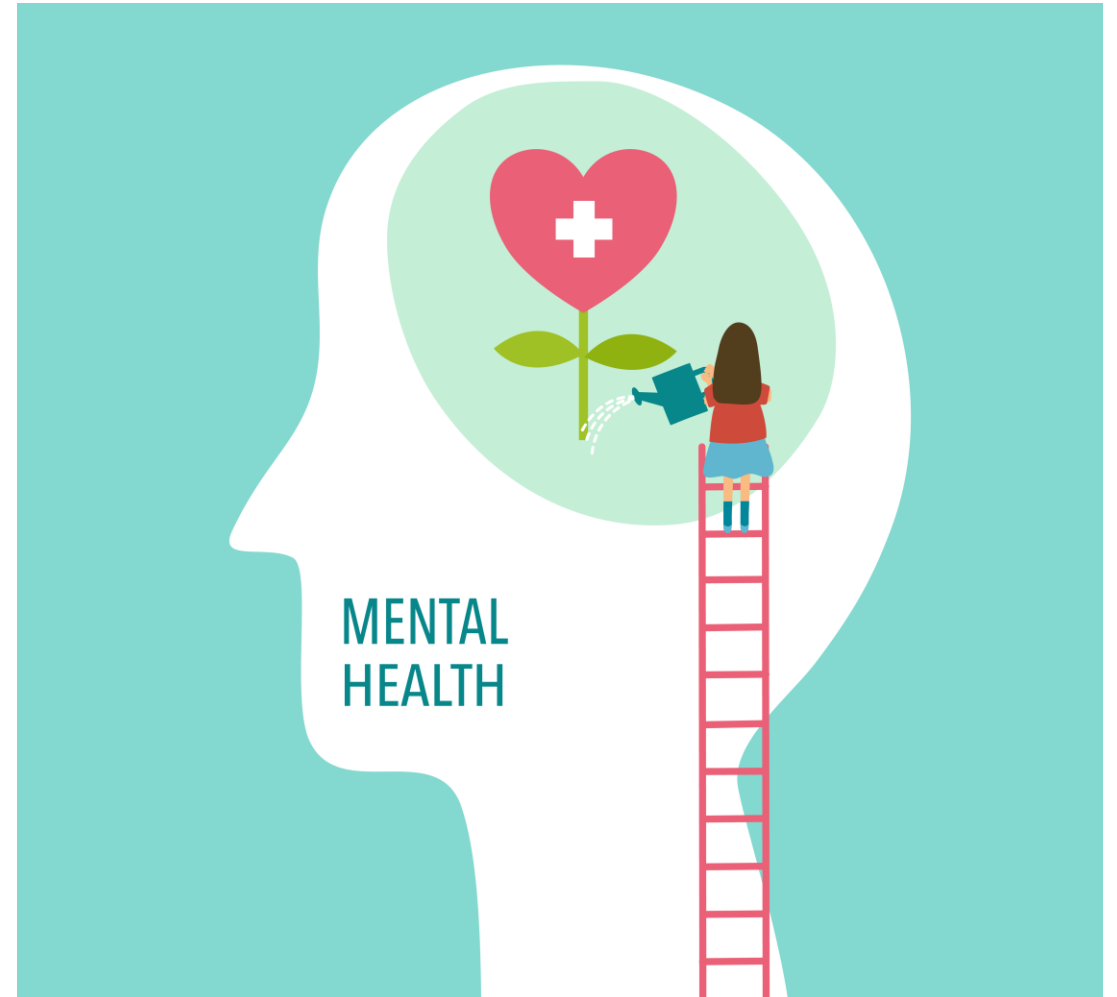
# News from L&D

## May 2021



# News from the team

- **As teleworking measures have been extended to 14th May, we're joining together with our colleagues at the [Medical Service](#) to take care of our **Mental Health**:**
  - Updated topics & tools in our [Wellbeing Remotely e-resources](#)
  - New offering in our [Work Well Feel Well](#) catalogue
- **Our courses are remaining virtual until further notice**



# News from the Learning Programmes

## Language

Enrol by 6th Sept for next session (Sept-Nov) of [General & Prof. French](#)

Courses starting anytime depending on demand:

- [General & Prof. English](#)
- [French integration course for beginners](#)
- [My first steps in French for Students & Trainees](#)

**Specific French & English** courses currently under revision. Stay tuned!

[contact](#)

## Leadership

• **NEW dates** added for SLs/Supervisors: ['Absence in the Workplace: Your Role as a Manager'](#)

• **Resilience Institute** - [Being a resilient Leader in a new reality](#) - Cast an eye on this [1 minute video](#) 'Being a Resilient Leader' and sign up to join Alexia Michiels for an interactive webinar

[contact](#)

## Personal Dev. & Communication

• **Focus on Your Career:**

- Expended offer (Group & Individual) [described here](#)
- Individual Programme open for [Supervisors](#) and for [Supervisees](#)

• Willing to develop tools and techniques to build confidence in **public speaking**? Check out [Making Engaging Presentation](#)

[contact](#)

## My career @CERN

**Quarterly Onboarding** - NEW formula:

• [Connecting the dots](#) (4 hours, every 2 months, all new MoP invited) – first event on **18 May**

- Short sessions (0.5 hours)
  - [Computer security](#) (monthly)
  - [Pension Fund](#) (every 3 months)

[contact](#)

L&D on Mattermost. Please join us [here](#)

# News from the Learning Programmes

## Technical Management

- [Quality Management](#): 4 courses with sessions foreseen as classroom in May/June now offered virtually while 4 courses cancelled for now.

- New course [From Needs to Solutions](#) seems to meet a need: all sessions (EN & FR) are steadily filling up!

- [Procurement courses](#): new formula well appreciated! A lot of participants for each module and very positive feedback.

NB: all above courses are designed & delivered by **internal trainers**, who are doing a great job!! Bringing high value training at no cost! [contact](#)

## Technical

- All **ITIL 4 Managing Professional** courses now available as self-paced e-learning: check out [our full offer](#)

- **macOS Support Essentials 11 (Big Sur) – full 3-day training + 1-day Upgrade** courses now available - **Enrol by 27th May**

- **LabVIEW** courses now offered as public virtual classroom: [Core 1](#), [Core 2](#) and [Core 3](#) [contact](#)

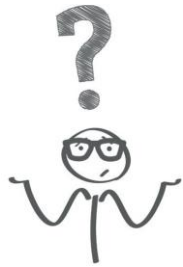
## Work Well Feel Well

- Watch this [1-minute teaser](#) on how to '[Secure Mental Fitness](#)' & sign up to join Alexia Michiels for an interactive webinar programme.

- [Teaser](#) on e-Workshop [Resilience - Assess, learn and track your resilience](#). Access to the **Resilience App** for 12 months. [contact](#)

L&D on Mattermost. Please join us [here](#)

# A Tip from the Learning Hub



Ever noticed the little drop down menu at the top?



Course descriptions and sessions are showing in your preferred language by default (cf. Settings>User preferences) but more/other sessions may be available in the other language!

Show description and sessions in : English - ( en )

## ANSYS DesignModeler

[Skip to Session](#)  
 Description and sessions in English

**Geometry modeling**

- the Graphical User Interface
- create and modify geometry in preparation for an analysis
- generate 2D sketches and convert them into 2D or 3D models
- modify 2D and 3D geometries
- import existing CAD geometry
- create line bodies and their cross sections in preparation for FE beam analysis
- model assemblies
- utilize parameters
- transfer to ANSYS Mechanical
- workshops and exercises

**Learning Type:** Classroom  
**Domain:** Mechanical engineering  
**Target Audience:**

- Technical staff

**Objectives:**

- Learn modeling and repair tools in ANSYS Design Modeler in order to prepare clean 2D and 3D CAD models to be used in FEM analyses

**Contact:** [technical.training@cern.ch](mailto:technical.training@cern.ch)

**Course Price (CHF):** 636  
**Number of Hours:** 8  
**Competencies:** Structures and machines  
**Course code:** 085ANS03  
[Click here to indicate your interest in taking this course...](#)

**Session(s):** Currently, there are no sessions scheduled in this language. Check for other languages, if applicable. As soon as new dates are available, they will be published on this page or click on "Indicate interest" if shown.

Close to top of page

# Participants wanted!



Classroom Courses	Course dates	Enrolment Deadline
<a href="#">CERN Service Management - Ticketing system (Foundation)</a>	11 May & 8 June (EN), 18 May (FR)	4 May or 1 June
<a href="#">Altium Designer Advanced</a>	19-21 May	05-May
<a href="#">JCOP - Finite State Machines</a>	17-20 May	07-May
<a href="#">ANSYS: Introduction to ANSYS Mechanical</a>	1-4 June	07-May
<a href="#">CERN EDMS - Introduction (short version)</a>	21 May (FR), 11 June (EN)	12 May or 4 June
<a href="#">CERN CET Basics</a>	21-May (EN), 11 June (FR)	12-May or 4 June
<a href="#">Expert VHDL for FPGA Design</a>	15-24 June	12-May
<a href="#">Introduction to Machine Learning with Python</a>	17-18 June	17 May
<a href="#">CERN Service Management - Ticketing system (Advanced)</a>	25 May & 8 June (FR), 1 & 15 June (EN)	18 May or 8 June
<a href="#">CERN Service Management - Ticketing System for Functional Managers</a>	28 May	21 May
<a href="#">Drupal 8 for non-Developers (Part 2): Site Building and Editing</a>	7-11 June	24 May
<a href="#">Siemens: TIA Portal Industrial Communication, Profinet with Industrial Ethernet</a>	14-17 June	24 May
<a href="#">Introduction to ANSYS HFSS</a>	14-15 June	24 May

*Courses will only take place if we reach a sufficient number of participants.*

# Participants wanted!

Other Portfolios



Classroom Courses	Course dates	Enrolment Deadline
<a href="#">Balancing Performance and Pressure</a>	27-28 May	3 May
<a href="#">e-Workshop - Challenging Conversations</a>	1-8 June (EN), 3-10 June (FR)	3-May
<a href="#">Search Inside Yourself Online</a>	1-15 June	3-May
<a href="#">Project management with openSE</a>	18 May	14 May
<a href="#">e-Workshop - Making Engaging Presentations</a>	28 May - 8 June	14 May
<a href="#">Service Orientation</a>	1-14 June (EN), 9-21 June (FR)	17 or 25 May
<a href="#">Scientific writing</a>	31 May - 1 July	21 May
<a href="#">Train the Trainer - M2 Delivery</a>	7-14 June (FR), 18-25 June (EN)	24 May
<a href="#">Project Control and Follow-up with OpenSE</a>	10 June	26 May
<a href="#">Selecting the Right person for CERN</a>	24-25 June	4 June
<a href="#">Project Risk Management with OpenSE</a>	24 June	10 June
<a href="#">Respecting Privacy in the processing of personal data at CERN</a>	6 July	27 June
<a href="#">Procurement Supplies &gt;50 KCHF - Price Enquiries</a>	5 July	28 June

*Courses will only take place if we reach a sufficient number of participants.*

# L&D Mandate

“The CERN Learning and Development team supports learning in its broadest sense - delivering a dynamic, extensive and high-quality portfolio of learning solutions and resources to equip and develop CERN members of personnel.

Learning solutions are designed to enhance the personnel’s knowledge and key competencies, to maximise their performance and potential to fulfil their functions/roles at CERN.

Promoting a culture of learning, motivation and engagement in alignment with the Organization’s vision and its evolving needs is at the heart of our mandate.”

<https://hr.web.cern.ch/learning-development>

